

leadersfor today

iLEAD: SERVANT LEADERSHIP EXPERIENCE

SPRING 2013 ASSESSMENT REPORT

ENROLLMENT

TOTAL ENROLLMENT

85

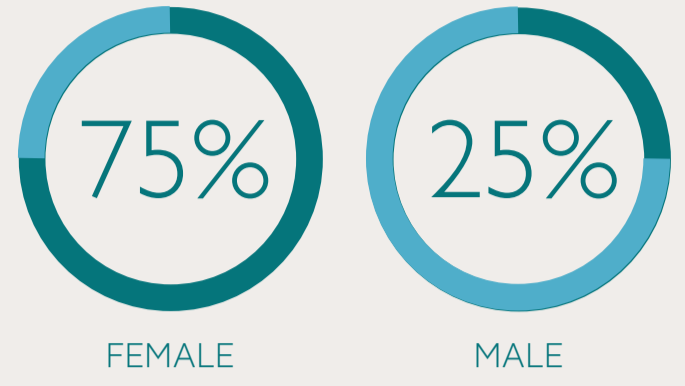
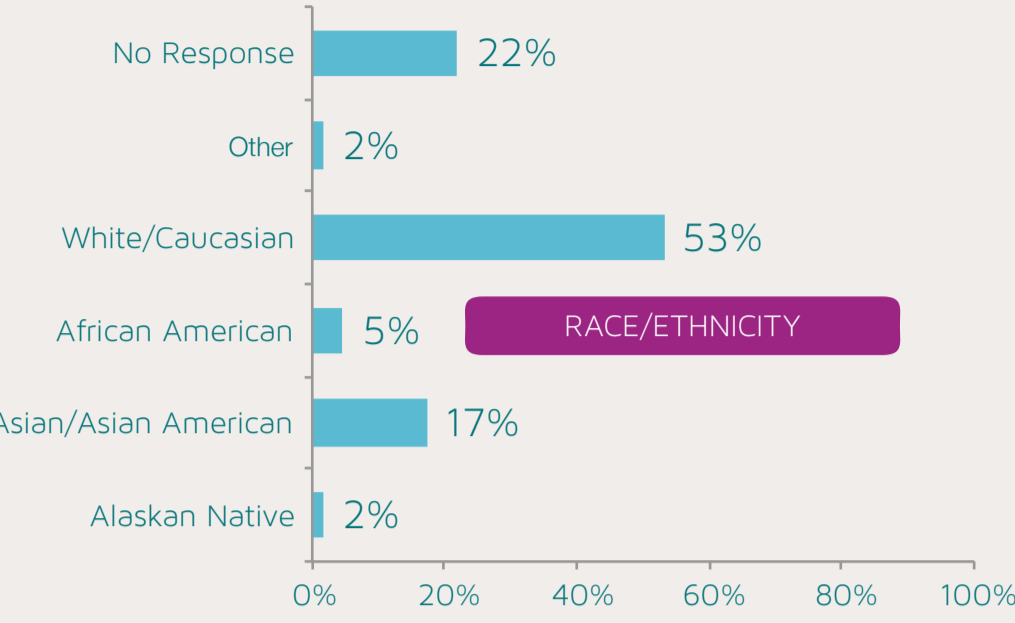
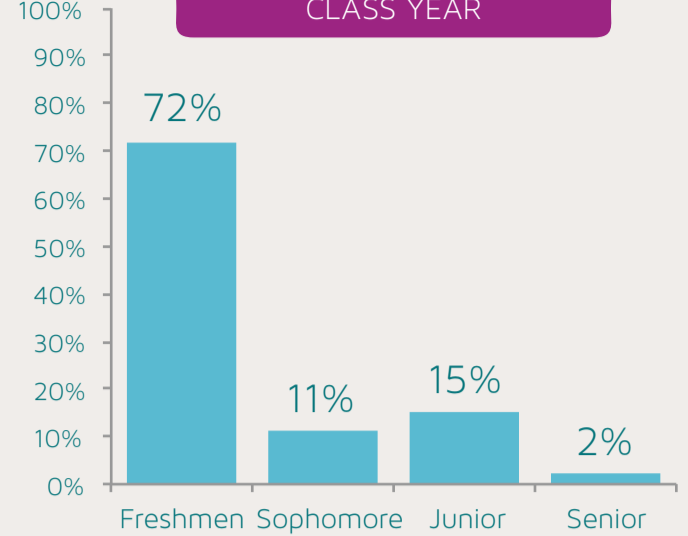
Students enrolled in iLEAD 101 during the spring 2013 semester

GRADUATES OF ILEAD 101

64

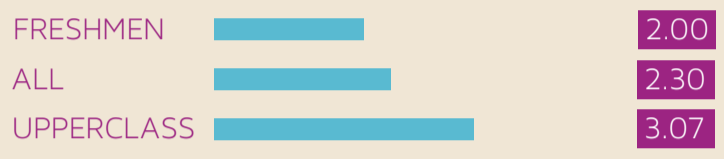
Students who completed all requirements for iLEAD 101 and received their certificate

CLASS YEAR

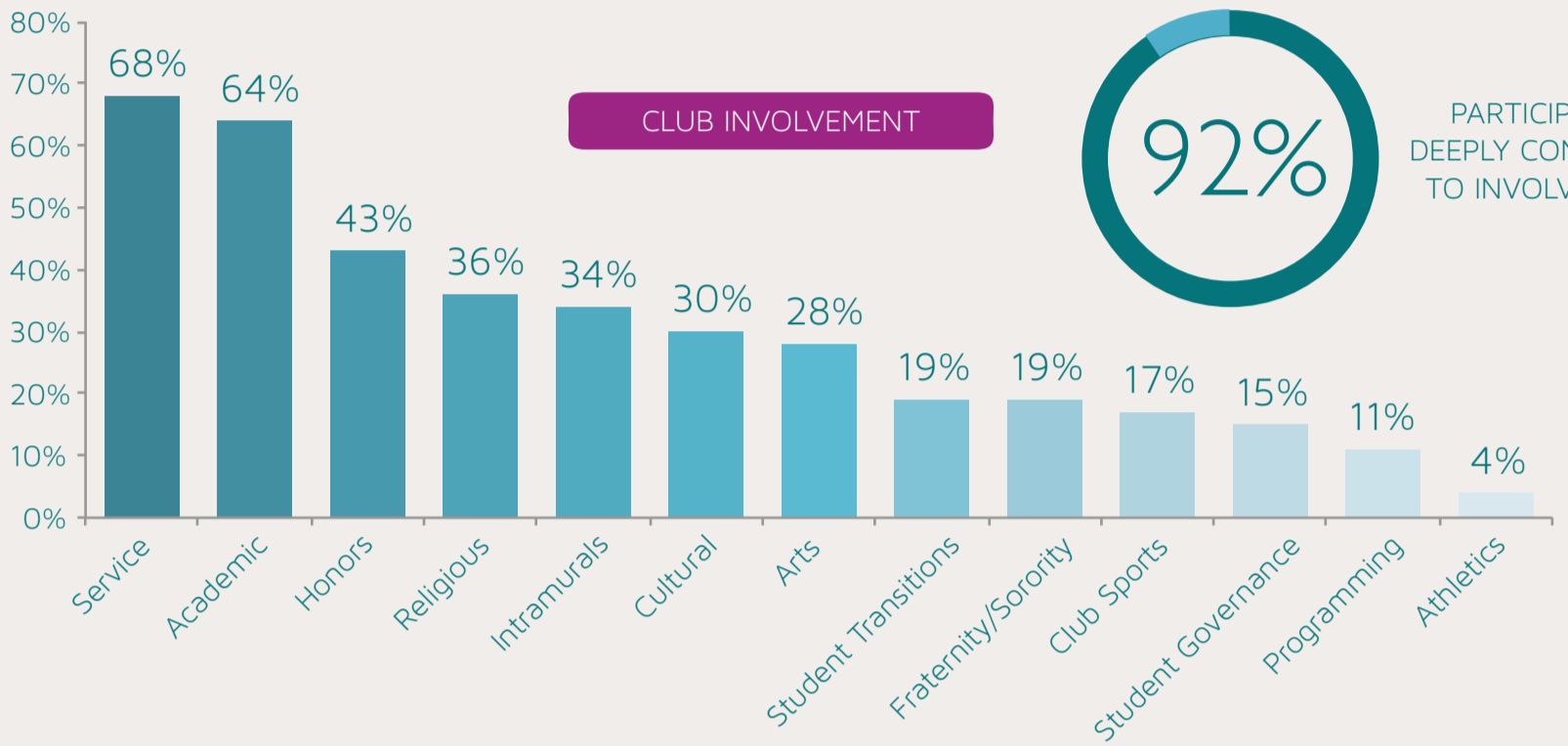
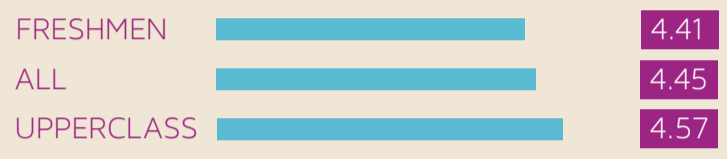


PARTICIPANT INVOLVEMENT

TAKING ON LEADERSHIP ROLES FOR ILEAD PARTICIPANTS

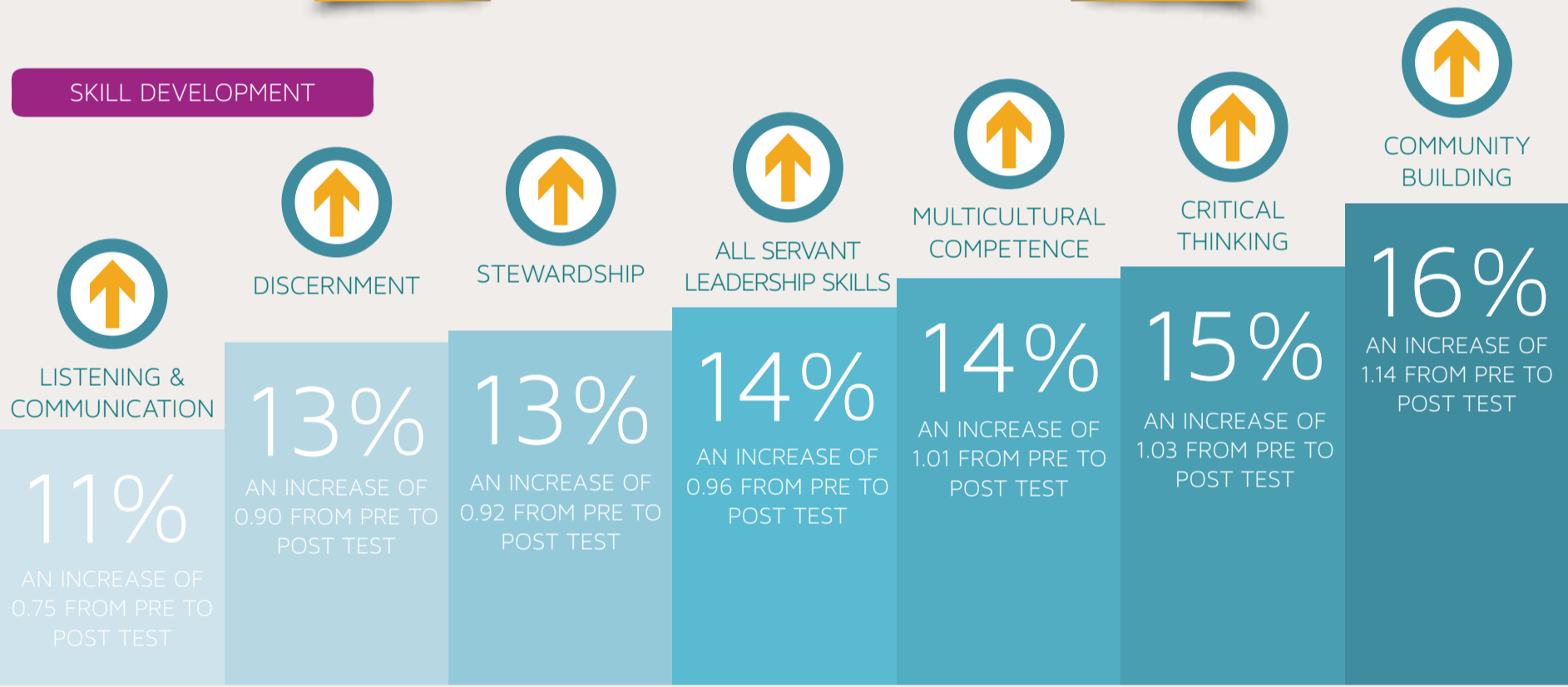


LEVEL OF INVOLVEMENT FOR ILEAD PARTICIPANTS



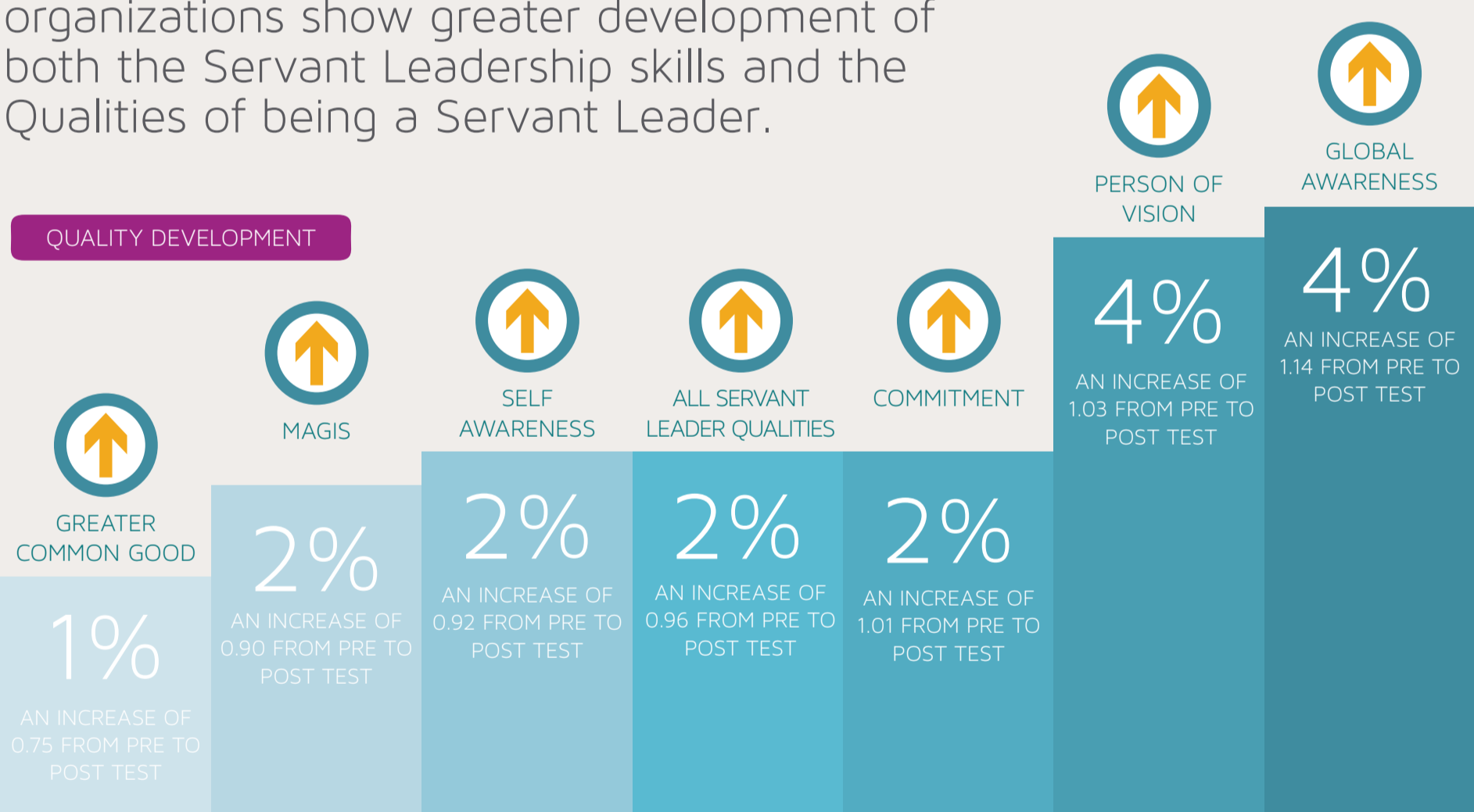
SERVANT LEADERSHIP DEVELOPMENT

SKILL DEVELOPMENT



Students who are more involved in clubs and organizations show greater development of both the Servant Leadership skills and the Qualities of being a Servant Leader.

QUALITY DEVELOPMENT



PROGRAM EVALUATION

RATING

8.21

On a scale from 1-10, students rate iLEAD an 8.21, as compared to other leadership programs they have been involved with.



"I learned what it takes to be a leader and it definitely takes more than I thought. iLEAD is a great program!"

RECOMMENDATIONS & ACTIONS



1

Maintain the new curriculum. Continue using the newly designed curriculum as it is a vast improvement from what has been done in the past.



2

Add new seminar on Qualities. A new seminar should be added to the current six that focuses on the qualities of a Servant Leader.



3

Market iLEAD 201 as lab. iLEAD 201 should be marketed as a leadership learning lab where students can practice these newly learned skills.



SAINT LOUIS UNIVERSITY

Higher purpose. Greater good.